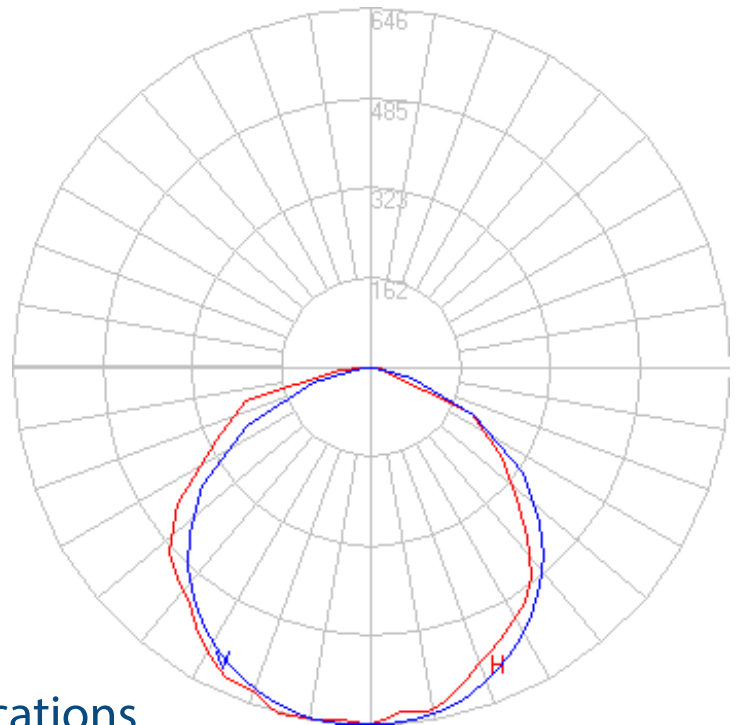
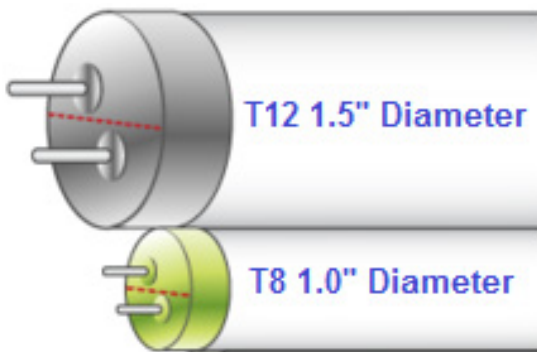




Energy Harness® LED linear lighting is designed to replace traditional fluorescent T8 and T12 lighting with energy saving and long lasting LED technology. Keep your fixtures and upgrade only your lights. These lights do not use a ballast and are environmentally friendly (no mercury). With energy savings between 50-65% and no maintenance required throughout the lifespan of the bulb, these LED lights are sure to pay for themselves!

Replacement



Applications

- Lobbies
- Warehouses
- Common areas

- Hospitals
- Offices
- More!



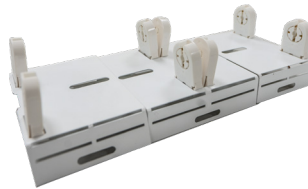
Specifications

- CRI > 80
- Beam angle > 120°
- Power factor > 0.9
- IP20 rated
- 100-277VAC 50/60hz
- Isolated internal driver
- Working temp: 14° - 113°F
- Ballast bypass
- Single ended power
- Aluminum housing

Accessories



23 mm non-shunted lampholders



(2) Lamp 8ft to (4) lamp 4ft Conversion Kit

T8 Tube:	2'	3'	4'	4'	4'
EHC Part Number	EHLR24-T809-xxK	EHLR36-T813-xxK	EHL48-T809-50K	EHL48-T816-xxK	EHLR48-T816-xxK
Replacement	15-25W	20-30W	30-40W	30-40W	30-40W
Wattage	9W	13W	9W	16W	16W
Lumens	955lm	1360lm	1500lm	1920lm	1920lm
Actual Length (in)	23.187"	35.158"	47.165"	47.165"	47.165"
Color (CCT)	3000K, 4000K, 5000K	3000K, 4000K, 5000K	5000K	4000K, 5000K	3000K, 4000K, 5000K, 6500K
Efficacy	105lm/w	105lm/w	165lm/w	112.5lm/w	112.5lm/w
Plastic Cover	Semi frosted	Semi frosted	Striped	Frosted	Semi frosted
Base	Rotating G13	Rotating G13	G13	G13	Rotating G13