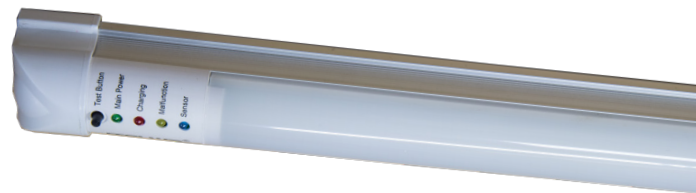




Energy Harness® LED Battery Back-up products provide emergency lighting options for fixtures that utilize LED lighting. We offer multiple styles of emergency battery back-up options to fulfill a wide range of uses. Upgrade your lighting and emergency fixtures to start saving on your electrical and maintenance costs today! Battery Back-up Options are great additions to troffer fixtures, tube lights, recessed can lights, and much more! Contact us today to upgrade your emergency lighting and start saving with the latest in LED lighting technology.



Applications

- Troffer / panel fixtures
- Tube lights
- General emergency lighting

- Recessed can lights
- Hallways
- More!



BBU:	Integrated 3' Fixture	16W BBU Box	Double Head Security
EHC Part Number	EHI36-1350K-277-BBU	EHA-EEBB-16W-Dual-Flex	EHF-EMERGENCY-EEM1LED
Output Power	13W	16W	1.8W
Input Power	100-277VAC	100-277VAC	120-277VAC
Lumens	1575lm	NA	NA
Emergency Operation	90 min. at 5W	90 minutes	90 minutes
Size (L" x W" x H")	35.75" x 1.13" x 1.13"	17.14" x 2.13" x 1.57"	10.5" x 3.5" x 3.25"
Color (CCT)	5000K	NA	NA
CRI	>80	NA	NA
Efficacy	>105lm/w	NA	NA

