



# LED Integrated T8 Lights

Energy Harness™ Integrated LED Lighting provides a modern design that is a smart alternative to fluorescent lighting. This unique design allows for these products to be used as their own fixture or mounted inside of existing fixtures.

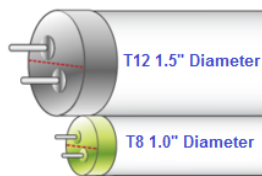
Integrated LED tube lights are safer than fluorescent tubes as they do not contain mercury or glass.

Great for ceilings, shelves, coolers, soffits, signs and more...!



EHC Integrated lights are maintenance free because they do not use a ballast. They are wired directly to A/C power for improved reliability. These lights can be easily daisy chained together from a single power source. The T8 Integrated Tubes are available in T8 Singles and T8 V-Types, both in a variety of sizes and colors to meet your needs.

### Product Replacements:



### Accessories: (Included)



(Additional)

**EHA-ONOFF-CABLE (3')**

71 Mid Cape Terrace Ste 8  
Cape Coral, Florida 33991  
1-239-790-3300 (US sales)

**Energy Harness Corporation**  
*"Reducing the cost of your energy"*

[sales@energyharness.com](mailto:sales@energyharness.com)  
[www.energyharness.com](http://www.energyharness.com)

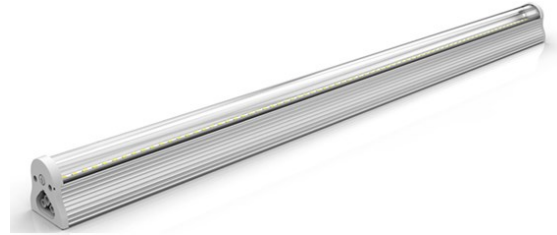
5225 Exploration Drive  
Indianapolis, Indiana 46241  
1-317-999-5561 (Midwest sales)



# LED Integrated T8 Lights

## Specifications:

- CRI>80
- Beam Angle >120° for T8, 240° for T8 V-Type
- Power Factor >0.9
- IP40/ IP65 rated
- Non-dimmable
- Aluminum housing
- Semi-frosted, Clear PC Cover
- Single ended power input
- Connectable up to 250W
- 100-277VAC 50/60Hz
- Isolated internal driver
- Working Temp: -20°C...+45°C
- Efficacy: 105lm +-5
- Ballast Bypass



## Certifications:



Integrated T8	2'	3'	4'	5'	6'
EHC Part Number	EHI24-T809-xxK	EHI36-T813-xxK	EHI48-T822-xxK	EHI60-T825-xxK	EHI72-T828-xxK
Replacement	15-25W	20-30W	30-40W	50-75W	70-85W
Wattage	9W	13W	22W	25W	28W
Lumens	993lm	1403lm	2389lm	2315lm	2590lm
Actual Length (Inches)	22.91"	34.96"	46.93"	58.78"	69.09"
Color (CCT)	3000K, 4000K, 5000K	3000K, 4000K, 5000K	3000K, 4000K, 5000K, 6500K	4000K, 5000K	4000K, 5000K
T8 V-Type	2'	3'	4'	5'	6'
EHC Part Number	EHI24V-T815-xxK	EHI36V-T816-xxK	EHI48V-T822-xxK	EHI60V-T825-xxK	EHI72V-T828-xxK
Replacement	15-25W	20-30W	30-40W	50-75W	70-85W
Wattage	9W	13W	15W	18W	25W
Lumens	692lm	1195lm	1512lm	2019lm	2218lm
Actual Length (Inches)	22.91"	34.96"	46.93"	58.78"	69.09"
Color (CCT)	5000K	5000K	5000K	5000K	5000K

## Energy Harness Corporation

*"Reducing the cost of your energy"*

71 Mid Cape Terrace Ste 8  
Cape Coral, Florida 33991  
1-239-790-3300 (US sales)

sales@energyharness.com  
www.energyharness.com

5225 Exploration Drive  
Indianapolis, Indiana 46241  
1-317-999-5561 (Midwest sales)