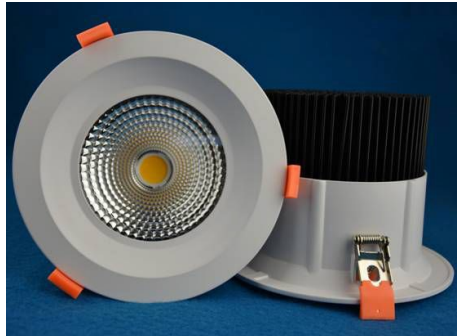




LED Downlights

Energy Harness™ LED Downlights are used to replace traditional can lighting. These energy efficient lights are available in a wide range of sizes and wattages for many applications. With using Energy Harness’s integrated technology the need to change bulbs and ballasts is completely eliminated. Upgrade to a clean modern look today to improve your lighting and start saving energy.



EHC LED Downlights are great for churches, hospitals, car dealerships, soffits, canopies, walkways, common areas and more. With energy savings between 50-65% and no maintenance required through the lifespan of the bulb, these LED lights are sure to pay for themselves!

Product Replacements:



Accessories:



Custom Size Trim Rings



Wireless Controls

Certifications:



71 Mid Cape Terrace Ste 8
Cape Coral, Florida 33991
1-239-790-3300 (US sales)

Energy Harness Corporation
“Reducing the cost of your energy”

sales@energyharness.com
www.energyharness.com

5225 Exploration Drive
Indianapolis, Indiana 46241
1-317-999-5561 (Midwest sales)



LED Downlights

Specifications:



- CRI>80
- Beam Angle 60°/ 120°
- Power Factor >0.9
- IP20 rated
- Non-dimmable
- Aluminum/ Plastic Housing
- Ballast Bypass
- 100-277VAC 50/60Hz
- Isolated External driver
- Average Lifespan >50000hrs
- Working Temp: -20°C...+45°C



Hole Size (")	4"	4"	5" / 6"	6"	8"	8"
EHC Part Number	EHD4TCP-10xxK-120	EHD4-20-xxK-277V	EHD56TCP-14xxK-120	EHD6-15xxK-277-D010	EHD8-15xxK-277-D010	EHD8-60xxK-277V
Replacement	40-65W	65-100W	65-85W	65-85W	65-85W	150-175W
Wattage	10W	20W	14W	15W	15W	60W
Lumens	620lm	650lm	820lm	1600lm	1600lm	6300lm
Efficacy	80	85	90	107	107	105
Base	E26	Direct A/C	E26	Direct A/C	Direct A/C	Direct A/C
Dimensions W X H	4"	128mm X 95mm	5" / 6"	190mm X 86mm	230mm X 99mm	230mm X 150mm
Color (CCT)	3000K, 4000K, 5000K	4000K, 5000K	3000K, 4000K, 5000K	4000K, 5000K	4000K, 5000K	4000K, 5000K
Lens Cover	Semi frosted	Clear	Semi frosted	Semi frosted	Semi frosted	Clear
Dimmable	Triac	0-10V optional	Triac	0-10V	0-10V	0-10V optional
Rating	UL, Energy Star	ETL, CE	UL, Energy Star	ETL, CE	ETL, CE	ETL, CE

Energy Harness Corporation

"Reducing the cost of your energy"

71 Mid Cape Terrace Ste 8
Cape Coral, Florida 33991
1-239-790-3300 (US sales)

sales@energyharness.com
www.energyharness.com

5225 Exploration Drive
Indianapolis, Indiana 46241
1-317-999-5561 (Midwest sales)